

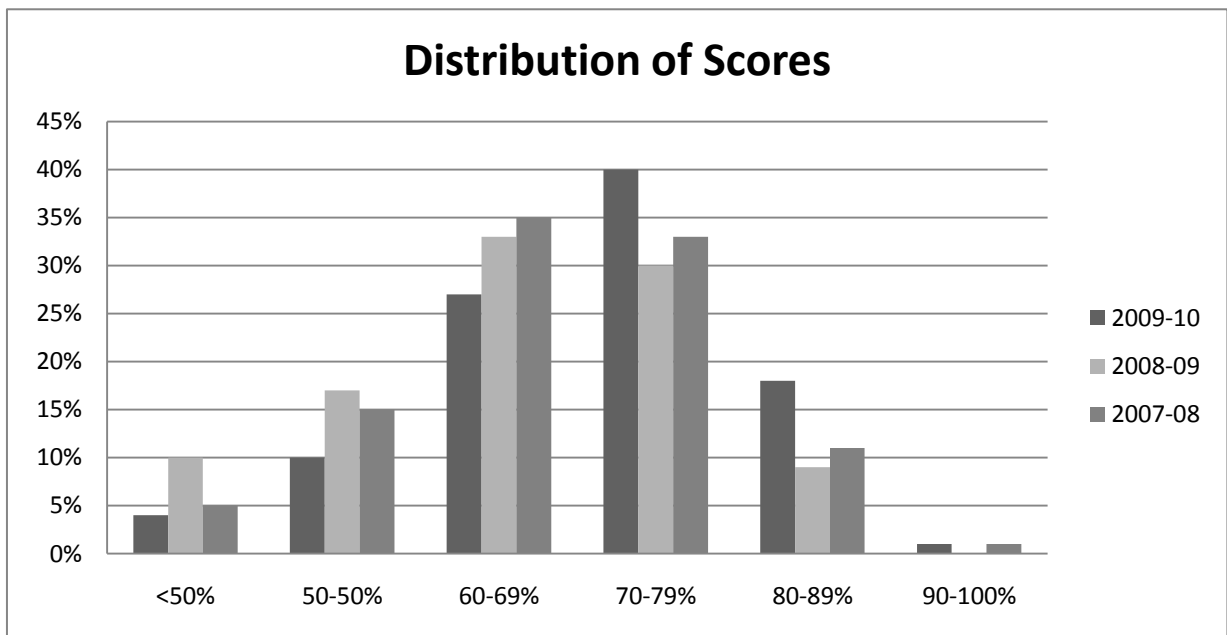
NATIONAL HEALTHCARE FOUNDATION SKILLS ASSESSMENT "AT A GLANCE"

	2009-10	2008-09	2007-08
Number of Schools:	354	291	57
Number of Test Takers:	13730	11736	3106
Number of Test Passers:	8025	4587	1360
Test Passers as % of Test Takers:	58.00%	39.00%	44.00%

Low Score:	21%	7%	15%
High Score:	97%	94%	95%
Average Score:	70%	65.12%	67%

Breakdown of Scores by Range:

<50%	4%	10%	5%
50-50%	10%	17%	15%
60-69%	27%	33%	35%
70-79%	40%	30%	33%
80-89%	18%	9%	11%
90-100%	1%	0%	1%



2009-2010 NATIONAL HEALTHCARE FOUNDATION SKILLS ASSESSMENT
Average Score of Students Taking Post-Test By State and Standard

	Average Score 2007-08		Average Score 2008-09	% Change	Average Score 2009-10	% Change	OVERALL CHANGE
Std 1: Academic Foundation	58		61	3%	60	-1%	2%
Std 2: Communications	63		67	4%	71	4%	2%
Std 3: Systems	65		70	5%	62	-8%	-3%
Std 4: Employability Skills	67		64	-3%	79	15%	12%
Std 5: Legal Responsibilities	78		67	-11%	74	7%	-4%
Std 6: Ethics	76		65	-11%	72	7%	-4%
Std 7: Safety	71		70	-1%	72	2%	1%
Std 8: Teamwork	85		74	-11%	76	2%	-9%
Std 9: Health Maintenance Practices	49		55	6%	62	7%	14%
Std 10: Technical Skills	58		46	-12%	69	23%	11%
Average Overall Score	67		65	-2%	70	5%	3%

2009-2010 NATIONAL HEALTHCARE FOUNDATION SKILLS ASSESSMENT
Number of Students Taking Post-Test By Gender and Ethnicity

	2009-10		2008-09		2007-08	
	Number	%	Number	%	Number	%
Female	10113	74%	9672	82%	2704	87%
Male	1832	13%	1785	15%	341	11%
Refused to Answer	1785	13%	278	2%	61	2%
Total	13730		11735		3106	

	2009-10		2008-09		2007-08	
	Number	%	Number	%	Number	%
Asian/Pacific American	179	1%	282	2%	56	2%
Black/African American	1779	13%	1869	16%	544	18%
Eskimo/Native American	280	2%	311	3%	232	7%
Hispanic/Latin American	447	3%	787	7%	324	10%
White/Caucasian	6587	48%	7552	64%	1743	56%
Other	203	1%	543	5%	106	3%
Refused to Answer	4255	31%	391	3%	101	3%
Total	13730		11735		3106	

2009-2010 NATIONAL HEALTHCARE FOUNDATION SKILLS ASSESSMENT
Number of Students Passing Post-Test By Gender and Ethnicity

	2009-10		2008-09		2007-08	
	Number	%	Number	%	Number	%
Female	5805	72%	3738	82%	1181	87%
Male	1125	14%	764	17%	154	11%
Refused to Answer	1097	14%	84	2%	25	2%
Total	8027		4586		1360	

	2009-10		2008-09		2007-08	
	Number	%	Number	%	Number	%
Asian/Pacific American	97	1%	119	3%	31	2%
Black/African American	658	8%	482	11%	175	13%
Eskimo/Native American	188	2%	154	3%	113	8%
Hispanic/Latin American	175	2%	314	7%	115	8%
White/Caucasian	4111	51%	3228	70%	847	62%
Other	132	2%	151	3%	40	3%
Refused to Answer	2666	33%	138	3%	39	3%
Total	8027		4586		1360	